






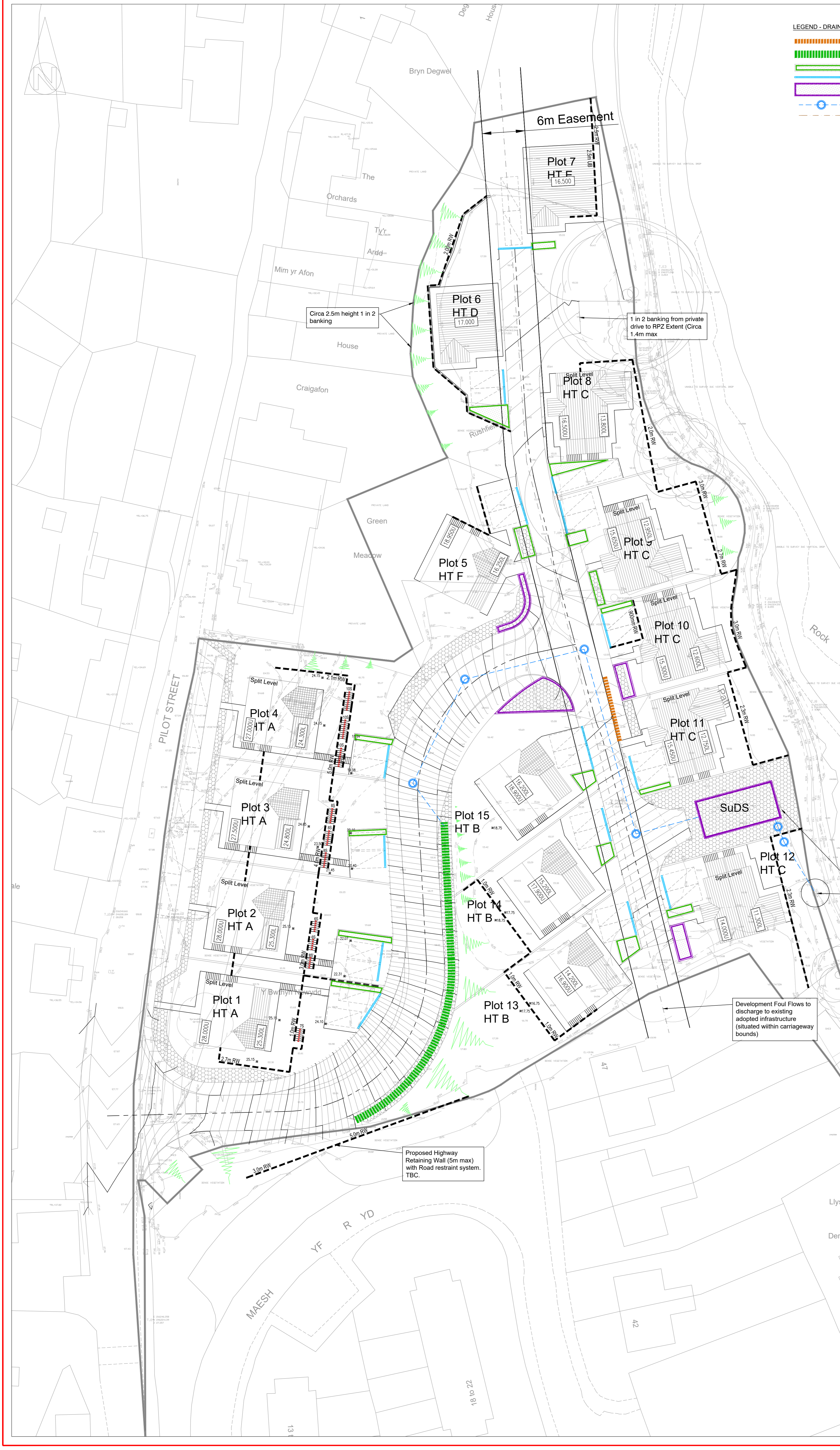


LEGEND - DRAINAGE FEATURES

-  Proposed Adoptable 600mm Linear Bioretention Area
-  Proposed Adoptable 1000mm Linear Bioretention Area
-  Private Raingarden / Bio-Retention Area
-  Channel / Aco drain or similar approved
-  Proposed Adoptable Bioretention Area/Raingarden
-  Indicative Primary Surface Water Sewer
-  Existing Adopted Foul Sewer



Circa 2.5m height 1 in 2 banking

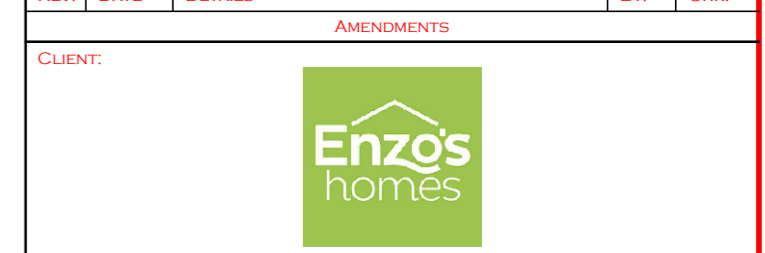
1 in 2 banking from private drive to RPZ Extent (Circa 1.4m max)

Treated Surface Water Discharge to existing drain to Tidal Estuary (Uncontrolled) via Bioretention area in POS

Development Foul Flows to discharge to existing adopted infrastructure (situated within carriageway bounds)

Proposed Highway Retaining Wall (5m max) with Road restraint system. TBC.

| REV. | DATE | DETAILS | AMENDMENTS | BY | CHK |
|------|------|---------|------------|----|-----|
| | | | | | |



phg CONSULTING ENGINEERS
 PHG CONSULTING LTD
 62A ALBANY ROAD
 CARDIFF CF24 3RR
 T: +44(0)1924 2030 2521
 E: enquiries@phg-consulting.com
 W: www.phg-consulting.co.uk

PROJECT: Enzo Homes Pilot Street St Dogmaels

DRAWING TITLE: Alternate Access Drainage Schematic

| DRAWN | CHK | STATUS | SCALE |
|----------|--------|-------------|------------|
| MP | MP | Preliminary | 1:250 @ A1 |
| DATE | JOB NO | DRG. NO | REV. |
| June2021 | 2143 | DS-100 | A |